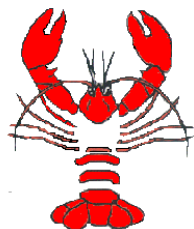


SANDCRUISER



Instruction Manual



Table of Contents

| | |
|----------------------------------|---------|
| Safety Procedures | Page 3 |
| Anti tip assembly/parking brake | Page 3 |
| To assemble the 'Sandcruiser' | Page 5 |
| Latch Pin Instructions | Page 5 |
| Final assembly check | Page 8 |
| To disassemble the 'Sandcruiser' | Page 8 |
| Adjustable parts | Page 10 |
| General Maintenance and cleaning | Page 11 |
| Warranty Conditions | Page 12 |
| General specifications | Page 12 |
| List of Components | Page 12 |
| Optional accessories | Page 14 |

Safety Procedures

The 'Sandcruiser' is designed for use in the great outdoors of Australia, so it is very important to be prepared before you head out on your adventure. The chair is designed for use on the beach, in the snowfields and on bush trails. So it is of great significance that you are conversant in the use of the 'Sandcruiser'.

You need to make yourself aware of weather conditions before heading off.

This would include weather such as incoming tides, wave patterns, wind strength, possible storms and blistering heat.

Do not leave any person unattended or left alone in the 'cruiser'.

If you are in doubt do not attempt to go into the water.

The 'Sandcruiser' has been designed to be used at the waters edge and is stable in water levels up to the centre of the tyres.

The 'chair' has balloon tyres which have a tendency to float depending on weight being carried.

The maximum weight of the intended user is **120kg**

Anti tip assembly/parking brake

An important component of the 'Sandcruiser' is the anti tip assembly and park brake. This is found at the rear of the chair below the hand rail (as seen in figure 1). When the anti tip mechanism is not in use it is attached to the top crossbar between the push handles.

To apply the park brake/anti tip mechanism

Ensure chair is stable, unstrap the parking brake/anti tip bar from the cross bar (as seen in figure 2), swing bar down and place foot on middle of the bar and push against tyres until locking bar is engaged (as seen in figure 3). The engagement of the locking bar prevents accidental release of the park brake and anti tip bar.



Figure 1



Figure 2



Figure 3

To release the park brake

Ensure chair is steady, lift the locking bar upwards, as seen in figure 4 & 5, to release the park brake. Lift the bar upwards until you are able to secure the bar with the strap on the top crossbar. As seen in figure 6



Figure 4



Figure 5



Figure 6

Assembly Instructions

Latch Pin Instructions

- Hold latch pin in the horizontal position (Figure A)
- Push latch pin through intended hole (Figure B)
- Turn latch pin into the vertical position (Figure C)
- Drop toggle so it locks pin into position (Figure D)



Figure A



Figure B

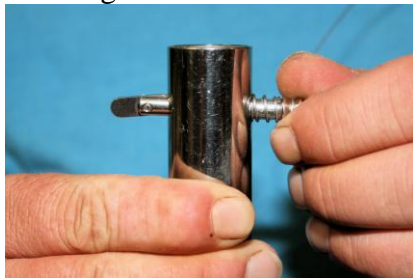


Figure C



Figure D

To assemble the 'Sandcruiser'

Assembly of front caster to seat frame

- Remove 'R' clip from bearing housing and slide the castor into the front caster housing. See figure 7
- Place the 'R' clip through the holes in the castor housing, ensuring it passes through both holes. See figure 8



Figure 7



Figure 8

Rear axle to seat frame

- Remove latch pins from the backrest axle clevis mounting points
- Align the drilled holes in the axle with the drilled holes in the clevis (figure 9)
- Add the latch pins as seen in latch pin directions on page 5



Figure 9



Figure 10

Backrest to the seat frame

- Remove the four latch pins from the mounting clevis in the seat frame
- Match up and align the two bottom clevis points at the base of the backrest ensuring that the tongue goes between the cheeks of clevis (Figure 11 & 12)
- Add the latch pins as seen in latch pin directions on page 5
- Align the two top clevis points and repeat the procedure



Figure 11



Figure 12

Rear wheels to axle shaft

- Remove 'R' clips from the axle shaft. Ensure that the axle shaft is clean and without grit or sand on the shaft (Figure 13)
- Align wheel centre with axle shaft (Figure 14)



Figure 13



Figure 14

- Slide on wheels so they contact the stop washer and refit the 'R' clip (Figure 15 & 16)



Figure 15



Figure 16

Front foot rest to seat frame

- Remove latch pins from the front of the seat rest
- Offer up and fit the spigot section of the footrest into the front end of the seat frame (Figure 17 & 18). Align the drop latch pin as seen in latch pin directions page 5



Figure 17



Figure 18

- Apply pressure to the red centre button and rotate to the downward position(Figure19). This holds the footrest in the required position



Figure 19

Final check

Before using the ‘Sandcruiser’ visually and physically check the following:

- ✓ That all pins are secured properly
- ✓ The ‘R’ clips in the wheels are fitted around the tube and not across the end of the tube
- ✓ That the park brake engages and releases correctly
- ✓ That the front caster ‘R’ clips are secured
- ✓ The tyres are inflated correctly
- ✓ Seat belt harness is fitted to the user

To disassemble the ‘Sandcruiser’

Rear wheel removal

- Remove the ‘R’ clips from either end of the axle tube and slide off (Figure 20 & 21)
- Refit ‘R’ clips onto axle to prevent loss



Figure 20



Figure 21

Rear axle removal from backrest

- Once rear wheels are removed, remove the spring loaded latch pins which retain the axle tube into the clevis at the base of the backrest frame (Figure 22 & 23)
- Refit spring loaded latch pins into back rest to prevent loss



Figure 22



Figure 23

Backrest frame removal

- Raise the arm rests to the vertical (Figure 24 & 25) and remove the four spring loaded latch pins which secure the backrest to the main seat frame
- Refit latch pins into the seat frame to prevent loss



Figure 24



Figure 25

Removal of front foot rest

- Remove two spring loaded latch pins, one from either side at the front of the seat frame (Figure 26)
- Pull away foot rest complete with upholstered panel
- Refit latch pins into frame to prevent loss



Figure 26

Front castor assembly removal

- Remove the 'R' clips from the front caster housing (Figure 27)
- The front castor assemblies can then be removed by sliding out from the housing (Figure 28)
- Refit 'R' clips through holes in the housing to prevent damage



Adjustable parts

Front foot rest

The foot rest is adjustable by height and angle. To adjust height and angle, release and turn in an anti-clockwise motion the locking handle on either side. Once height/angle is correct relock the foot rest by rotating the locking handle in a clockwise direction. The acrylic leg support panel is adjustable for position by releasing the Velcro straps, adjusting the panel as required and refitting the straps.

Arm rests

The arm rests can be raised to a position that is 90 degrees from the horizontal. This provides for an easier transfer from 'Sandcruiser' to vehicle or similar.

BE AWARE ON SUNNY DAYS BARE METAL PARTS CAN BECOME VERY HOT AND MAY CAUSE BURNS TO THE SKIN.

General Maintenance and cleaning

Stainless steel frame

All frame components are manufactured from 316 Marine grade stainless steel. After use in the salt water or a sandy environment, it is strongly recommended that the chair is washed down using fresh water and allowed to dry properly before storing away.

Seat fabric

The upholstery fabric used is made from breathing, UV stabilised acrylic. Therefore a salt laden environment is not an issue.

After each use it is strongly recommended that the chair is washed down using fresh water and allowed to dry properly before storing.

Front castors

The front castors rotate through 360 degrees making turning an easy manoeuvre. The bearings and bushes used in the casters are manufactured from stainless steel and nylon which are preset and do not need adjusting when assembling and disassembling. Front castors should be washed down with fresh water after use in salt water.

Wheels and tyres

The rims are manufactured from a plastic material and come fully assembled with bearings and soft plastic pneumatic tyres, inflated to 3 pounds using a bicycle pump.

DO NOT OVER INFLATE TYRES

The wheel assemblies and axle should be washed with fresh water after use in salt water.

For tyre repairs see attached information with tyre repair kit.

Warranty Conditions

The 'Sandcruiser' is warranted against faulty materials or workmanship for a period of 12 months from date of purchase. No warranty work may be carried out on the chair during this period without written permission of 'Yabby Industries'. No unauthorised claims for repair costs will be accepted from the repairer or purchaser under any circumstances.

Any unauthorised modifications to the chair or its accessories is expressly forbidden and any such work will effectively render any warranty null and void.

The chair is to be returned to Yabby Industries for any warranty work or repairs.

All requests for repair work must be through Yabby Industries prior to sending the chair for repairs. Contact details on front page.

If tyres have exceeded the pressure of 4PSI or chair has been overloaded (maximum weight is 120kgs) tyre warranty will be void.

General specifications

Seat width 18 inches

Seat height approx. 21 inches (53cms)

Length overall 48 inches (120cms) including footrest

Maximum width 38.5 inches (98cms)

Height from ground to top handles 40 inches (102cms)

Front to rear wheel centres 22 inches (56cms)

Weight assembled 35Kg (approximately)

List of Components

Frame

- Seat frame x 1 (316 marine grade stainless steel tubing)
- Backrest Frame x 1

Upholstery

- Seat x1 (Docril UV stabilized acrylic canvas)
- Backrest x1
- Footrest x 1

Front tyres

- 2 x Roleez tyres - 11.8 x 7 inches (39 x 18cms)

Rear tyres

- 2 x Roleez tyres – 19.8 x9 inches (49x23cms)

General components

- ‘R’” clip for rear wheel
- Front fork/wheel assembly x 2
- Footrest assembly
- Rear axle x 1
- Arm rests x 2



Seat Frame



Back rest



Rear Wheel Axle



Footrest



Rear Wheels



Front Casters



All frame Components

Optional accessories

The following accessories are available by contacting Yabby Industries.

- Headrest
- Shoulder Harness
- Lateral trunk support